

TECHNICAL DATA SHEET

Item: CB50/3, CB50/3S, CB50/4S, CB50/5S

Description: modular chest of tilting drawers Crystal Box

Material: PET (polyethylene terephthalate) for drawers and compound between PP and talc for body.

Colours: Light gray similar to RAL 7035 (GC) or anthracite gray similar to RAL 7016 (GS) for body and transparent for drawers.

Notes:

Suitable for food contact. Made with antistatic materials resistant to aggressive chemical agents and fuels. The product is shock resistant and able to withstand high loads. The drawers are scratchproof and unbreakable and they keep the transparency unchanged over time. For each drawer is supplied a removable adhesive label. Working temperatures from -50°C to +150°C.

Optionals :

- metallic anti-tip lock on the drawer (available for all versions)
- transparent inner trays available only for 3S version (dimensions 77x102x105 mm weight 135 g).

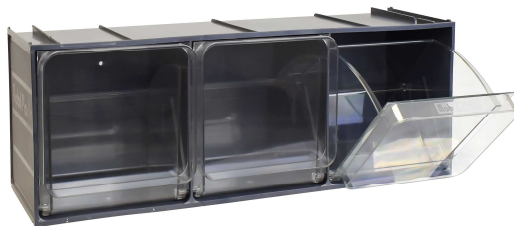
	CB50/3	CB50/3S	CB50/4S	CB50/5S
Drawer weight (kg)	0,5	0,4	0,5	1,1
Drawer capacity (liters)	3	1,9	2,5	7,9
Product total weight (kg)	1	2,1	2,9	4,4
Product length (mm)	300	600	600	600
Product depth (mm)	155	155	200	240
Product height (mm)	175	175	215	300



CB50/3



CB50/3S



CB50/4S



CB50/5S

	CB50/3	CB50/3S	CB50/4S	CB50/5S
Packing tot weight (kg)	2,2	2,4	3,3	4,7
Quantity per box (pcs)	2	1	1	1
Packing length (mm)	610	610	610	610
Packing depth (mm)	160	160	200	245
Packing height (mm)	185	185	225	300
Volume (m³)	0,018	0,018	0,027	0,045
Q.ty per pallet 80x120 cm	99	198	72	36